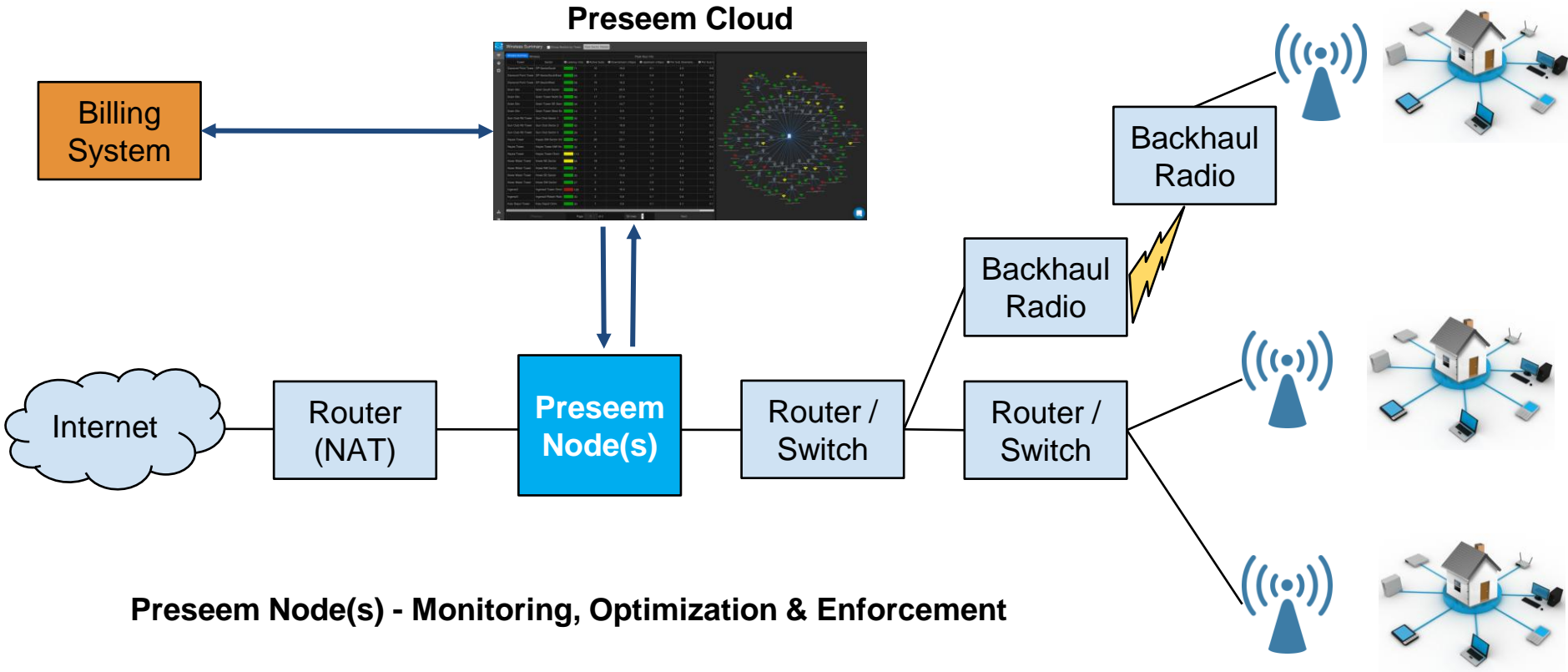
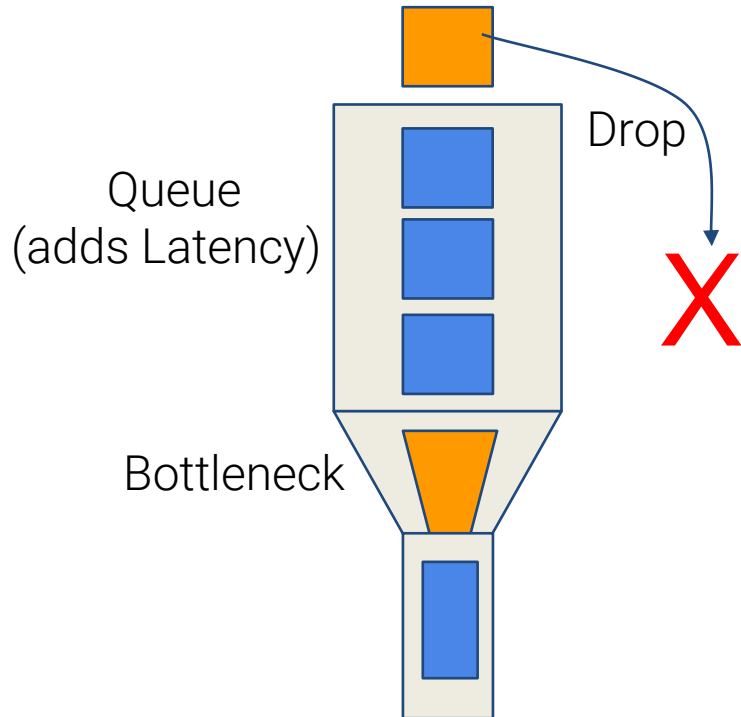


Preseem - Turnkey QoE Platform for WISPs





Good QoE is about

- Sufficient bandwidth
- Low latency
- Low packet loss

Bottlenecks prevent good QoE.

Find them!

(Fixed) Wireless QoE is tricky



Wireless		Metrics							
Tower	Sector	Latency (ms)	Active Subscribers	Downstream (mbps)	Upstream (mbps)	Subscriber Downstream	Subscriber Upstream	% Busy	TCP Retransmit %
Angela Talley	Talley-Bynum AP	159	1	5.29	0.18	3.6	0.17	3%	1%
Bells Water Tower	Bells Baicells 2.5 - NV	52	1	0.3	0.04	1.02	0.08	2%	1%
Bells Water Tower	Bells Baicells 2.5 - SE	69	1	13.85	0.44	8.79	0.31	3%	2%
Bells Water Tower	Bells Baicells 2.5 - SV	74	1	1.46	0.11	1.13	0.07	3%	1%
Bells Water Tower	Bells Baicells 3.65 - h	58	1	8.35	0.5	5.82	0.48	4%	3%
Bells Water Tower	Bells Baicells 3.65 - h	56	1	2.03	0.14	1.62	0.15	3%	1%
Bells Water Tower	Bells Baicells 3.65 - S	59	2	21.76	1.04	13.3	0.67	4%	4%
Bill Johnson	Bill Johnson AP	200	1	2.55	0.62	1.86	0.36	3%	4%
Bob Cosby	Bob Cosby AP	42	1	9.49	0.41	5.43	0.3	3%	1%
Brian Shaffer	Bryan Shaffer-Stanley	63	1	0.79	0.05	0.7	0.06	3%	2%
Chad Buchanan	Chad Buchanan Tower	76	1	3.61	0.15	1.62	0.09	4%	1%
Charlotte Cheek	Maxwell-Charlotte AP	98	1	4.9	0.28	3.62	0.31	4%	4%
Cheri Motley	Adam Dewolf- Cheri Motley	77	1	6.48	0.59	4.81	0.47	4%	3%
Cody Carter	Cody Carter AP	28	1	0.02	0.02	0.03	0.02	2%	4%
Cox Tower	Mimmie Cox AP	164	1	8.72	0.74	6.96	0.62	4%	4%
Craig Rose	CraigRoseShop2Hou	90	1	7.39	0.38	6.36	0.5	4%	1%
Cyrinus Metal Works	Luke Cyr Shop AP	61	1	5.13	0.17	4.51	0.15	4%	1%
David Gallup	KM-DG-AP	78	1	3	0.17	2.1	0.18	3%	3%
Debbie Keeth	Debbie Keeth - Rhonda	63	1	12.71	0.47	7.85	0.32	3%	0%
Diamond Point Tower	Baicells 2.5 eNB - N	76	5	37.01	2.64	8.05	0.51	4%	2%
Diamond Point Tower	Baicells 2.5 eNB - SS	200	1	0	0	0.21	0.02	3%	4%
Diamond Point Tower	Baicells 2.5 eNB - W	94	5	26.42	1.35	6.84	0.35	4%	2%
Diamond Point Tower	DP-Castellano AP	20	1	3.57	0.35	2.85	0.29	2%	1%
Diamond Point Tower	DP-SectorSouth	77	2	20.53	2.49	8.03	0.93	4%	1%
Diamond Point Tower	DP-SectorSouthEast	36	1	8.7	1.11	5.12	0.67	2%	2%
Diamond Point Tower	DP-SectorWest	69	4	14.76	2.7	3.08	0.76	4%	3%

Fixed Wireless capacity has uncertainty & variability

Access Points are the weakest link

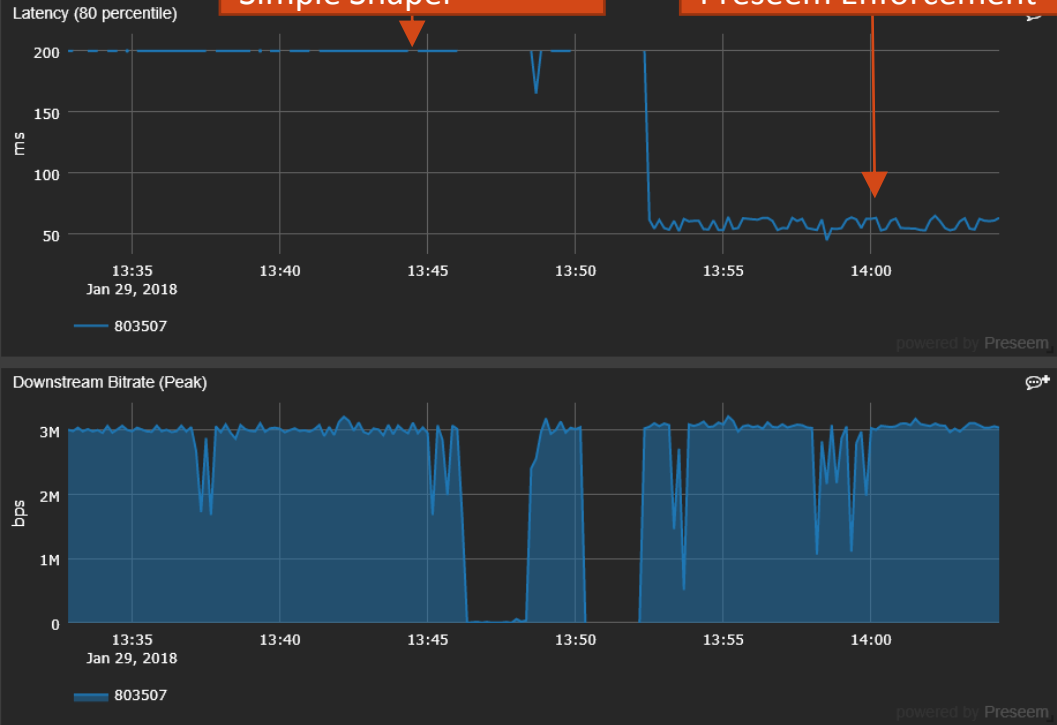
Then there's in home Wi-Fi

Bottlenecks!

Plan Enforcement / Bandwidth Shapers

Simple Shaper

Preseem Enforcement



Simple shapers limit all traffic the same way

When the connection maxes out, latency shoots up and everything feels slow

Newer standard algorithms fix this.

What Our Customers Think



"Preseem's platform takes all the guesswork out of traffic shaping, it just works! Their staff has been there every step of the way, helping us with implementation. This has been one of the easiest and most hassle-free deployments of a hardware/software platform I have come across. Their customer service is top notch. Thanks a million Preseem!"



Mark Petrocchi
CTO, Align Tec

"I've used a DPI-based QoS platform before and have been using Preseem for 11 months now. QoE monitoring is the main point of Preseem's service and the FQ-CoDel based Shaping is an added benefit, not the other way around. Their QoE data is way more valuable than SNMP monitoring of some back haul and APs. It's down to the second accurate on the performance a customer or AP is actually seeing. I personally think that while the DPI-based QoS platform was good and we used it for a year, we moved away from it and decided not to mess with DPI and specific apps and just focus on improving the network using Preseem to show us the before/after results."

"Preseem has been an invaluable tool in providing insights into our network's true performance levels and end-user quality experience. Since implementing Preseem we have uncovered issues that other tools, like ping and SNMP, did not alert us to with the same impact. The Preseem interface clearly shows you a full picture of performance, not parts of it"

Joe Falaschi
VP, E-Vergent Wireless

Table 24
BC Broadband
Conference 2019

Say Hi!



Darin Steffl
CEO, Minnesota Wifi