



Ministry of
Citizens' Services



British Columbia Broadband Association Conference

April 30, 2019

Susan Stanford, Assistant Deputy Minister
Information Communications Technology

Howard Randell, Executive Director
Network BC

Connectivity

Multiple sectors, organizations and government priorities point to Connectivity as an underlying requirement, particularly in rural communities and First Nations. Ensuring connectivity investments are optimized, stronger linkages are required with some sectors.

Rural Communities

Rural communities and regions will play a major role in helping BC meet the challenges of the next century.

- *New energy sources*
- *Food production innovation*
- *Natural resources and natural systems stewardship*



Connectivity is foundational for community prosperity, especially for underserved rural and Indigenous communities.



BC's Connectivity Status

88% of Canadian households have access to at least 50 Mbps

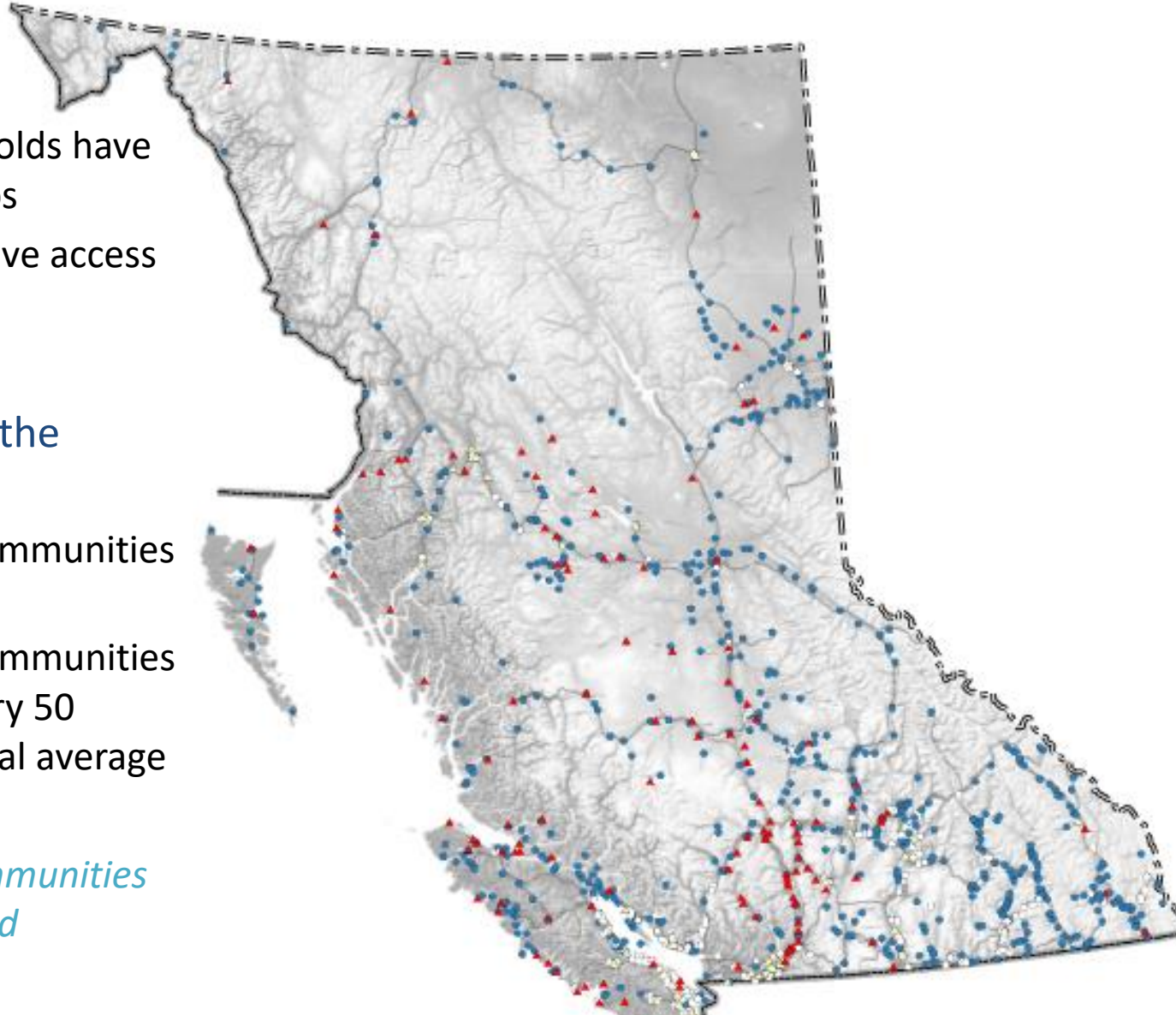
92% of BC households have access to at least 50 Mbps

But this is only part of the story...

41% of rural Canadian communities have access to 50 Mbps

Only **30%** of BC's rural communities have the ability to delivery 50 Mbps—below the national average

Since July 2017- 455 communities will have service improved



Connectivity Framework



Place-based



**Pooled
Knowledge**

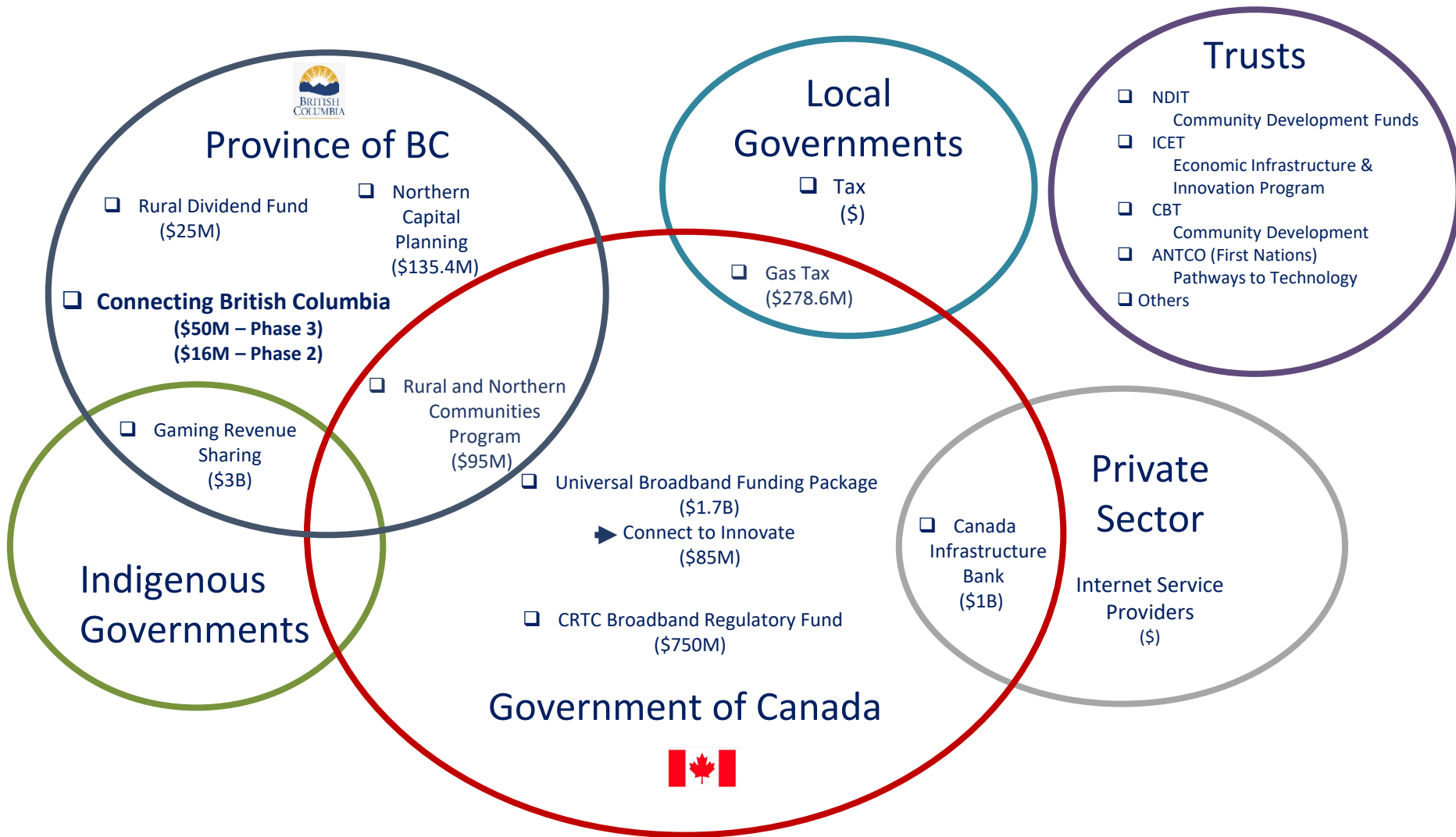


**Local
Economy
Investments**



Build-once

Connectivity Funding Landscape



Current Approach

Infrastructure Planning

- Where and what type of infrastructure would be required? (backbone + last mile)
- What are the access/technology options? (fibre/satellite/wireless)
 - Who owns and operates the current infrastructure? (private or gov owned/operated)
 - If publicly owned, what is the governance model?
- Are there any feasible regional approach/pooled funding options?
- Where are the possible partnerships?

Service Assessment

- What service would meet your needs? (i.e. Tsunami Warning System, Tele-Health)
- What is required? (i.e. 24/7 monitoring)
- Level of service required? (i.e. interruptions critical?)

Community Needs/Priorities

Problems

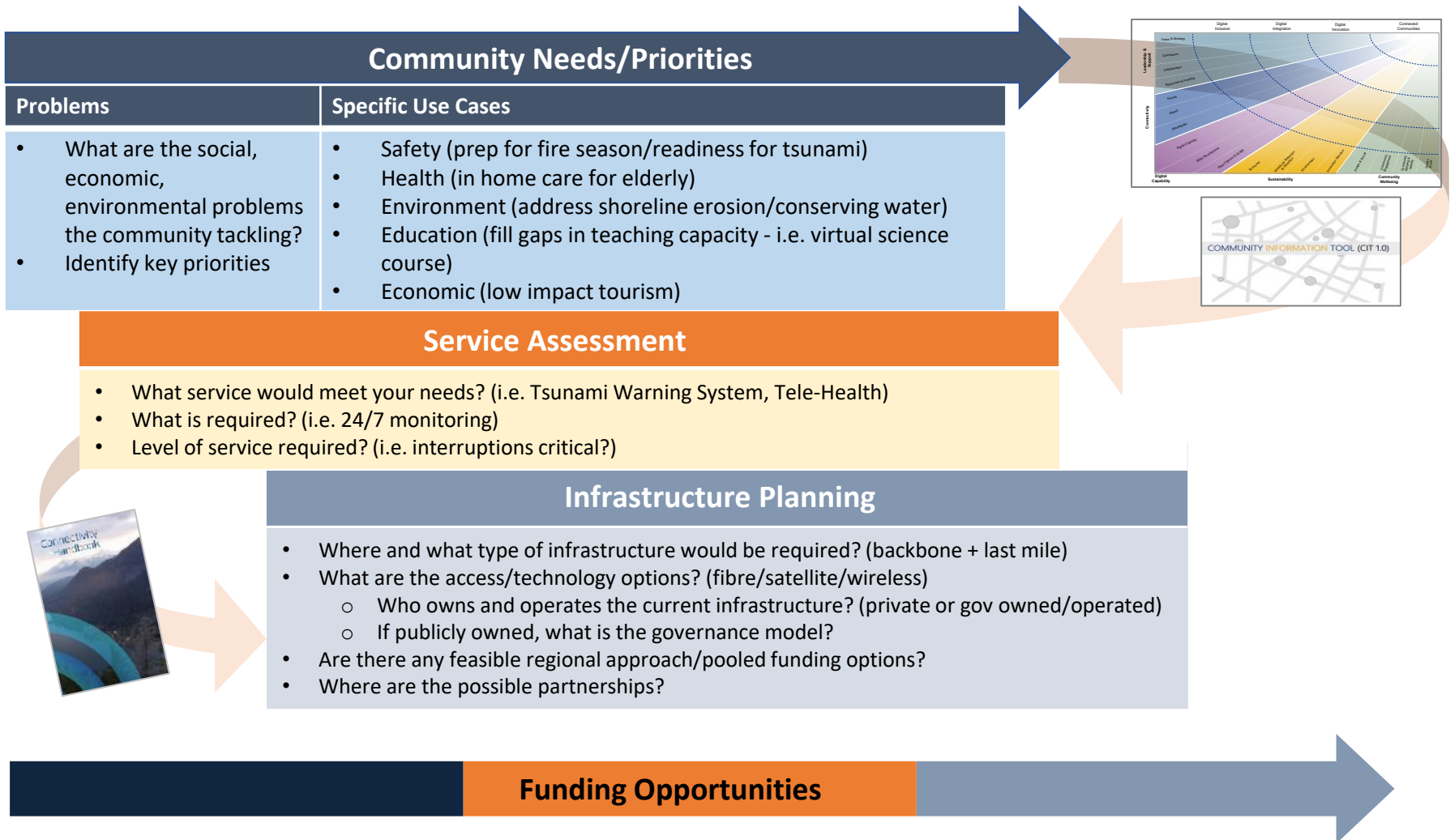
- What are the social, economic, environmental problems the community tackling?
- Identify key priorities

Specific Use Cases

- Safety (prep for fire season/readiness for tsunami)
- Health (in home care for elderly)
- Environment (address shoreline erosion/conserving water)
- Education (fill gaps in teaching capacity - i.e. virtual science course)
- Economic (low impact tourism)

Funding Opportunities

Connectivity Planning



Thank you

Q&A